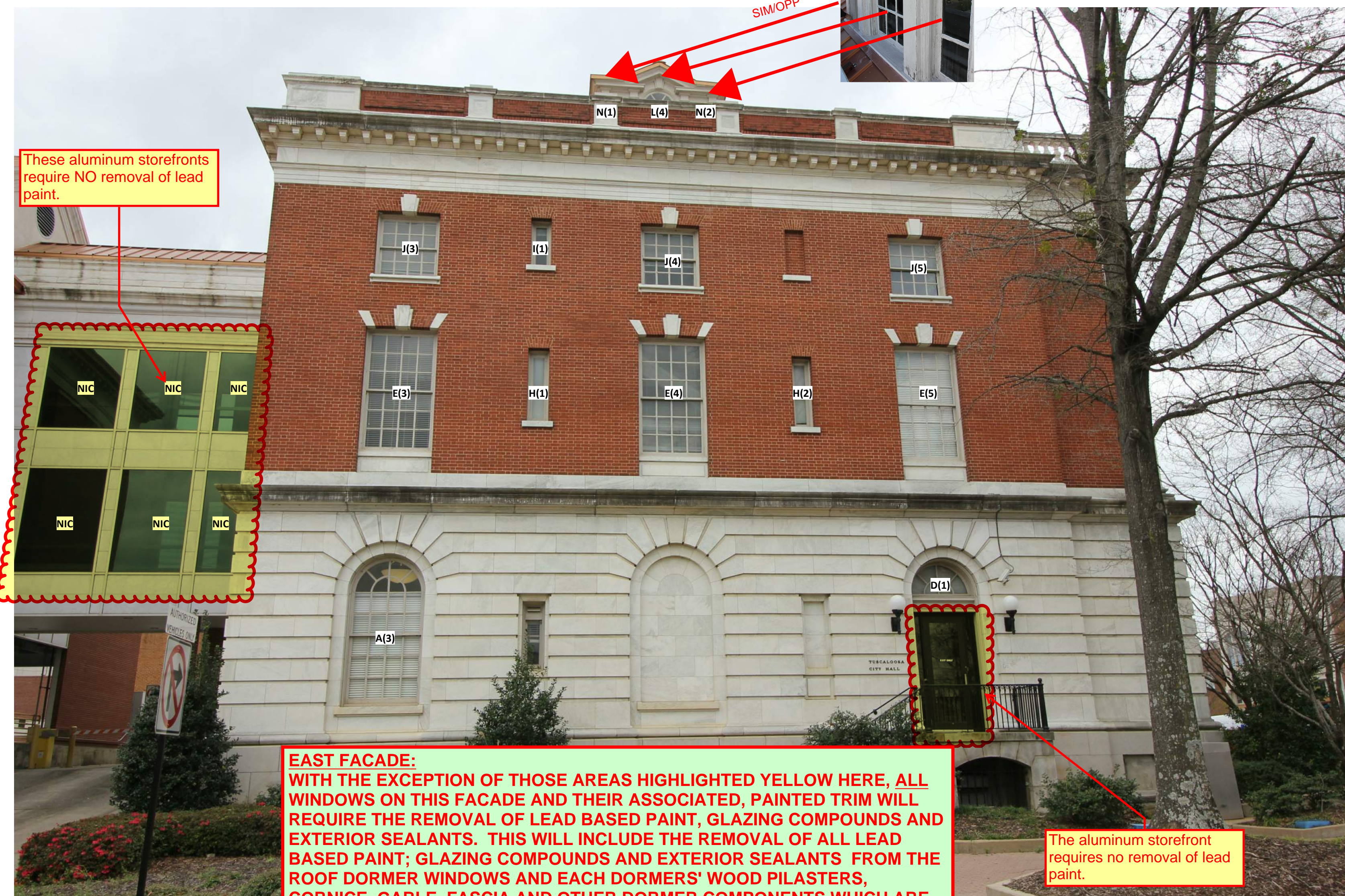
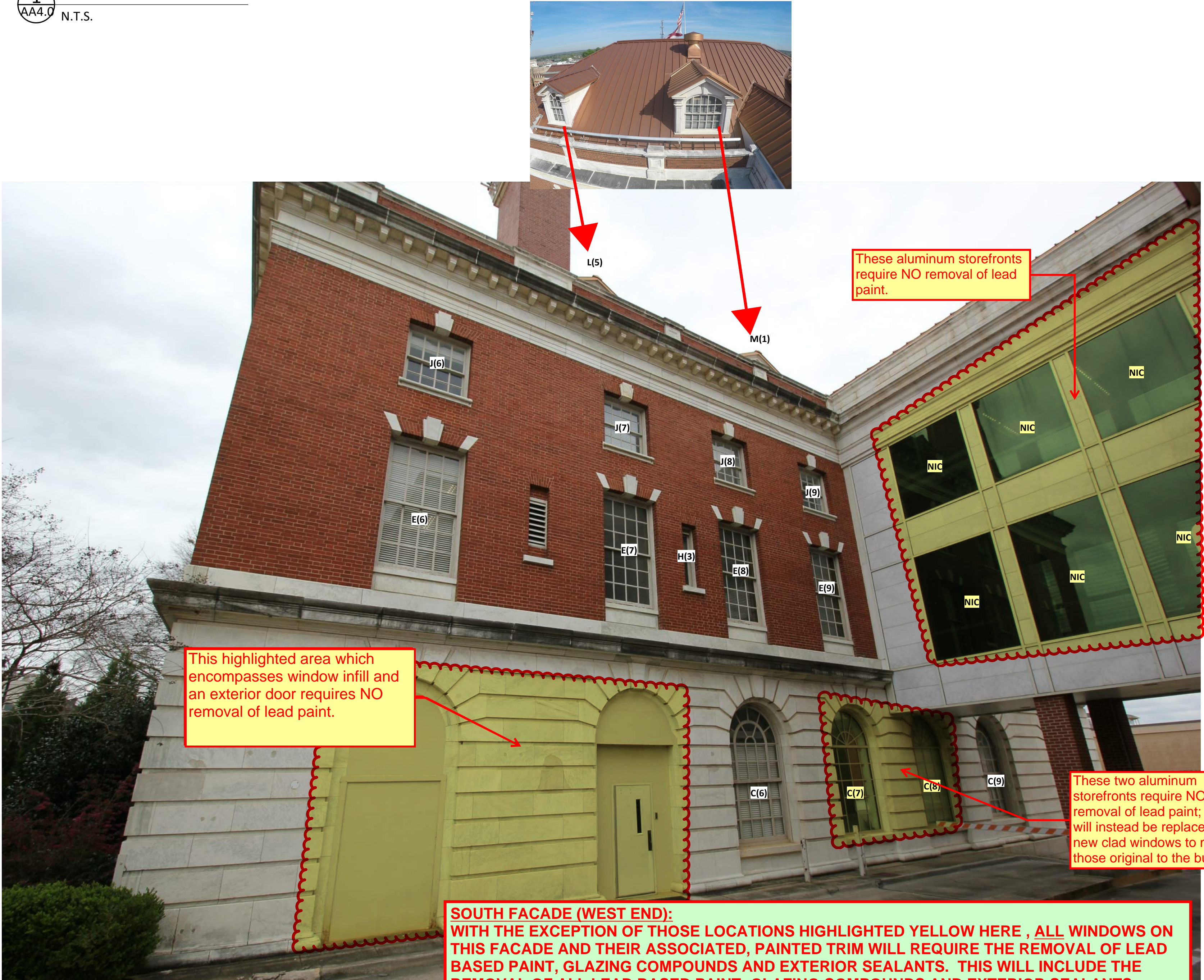




1 FRONT ELEVATION  
AA4.0 N.T.S.



2 EAST ELEVATION  
AA4.0 N.T.S.

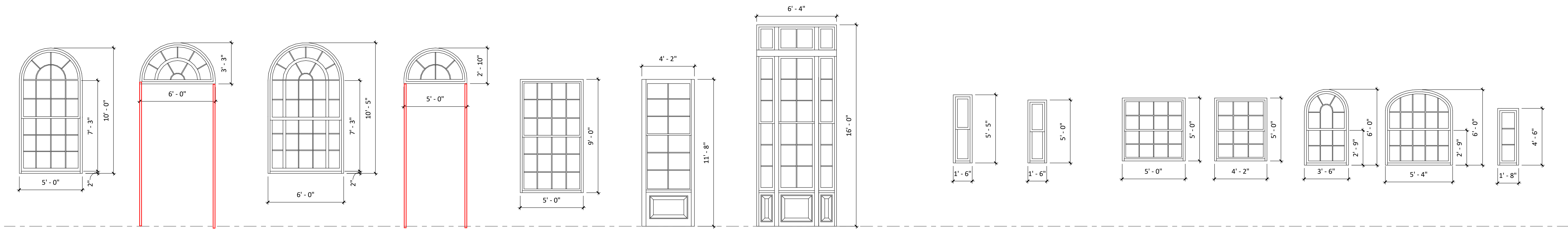


3 REAR ELEVATION (PART A)  
AA4.0 1/8" = 1'-0"



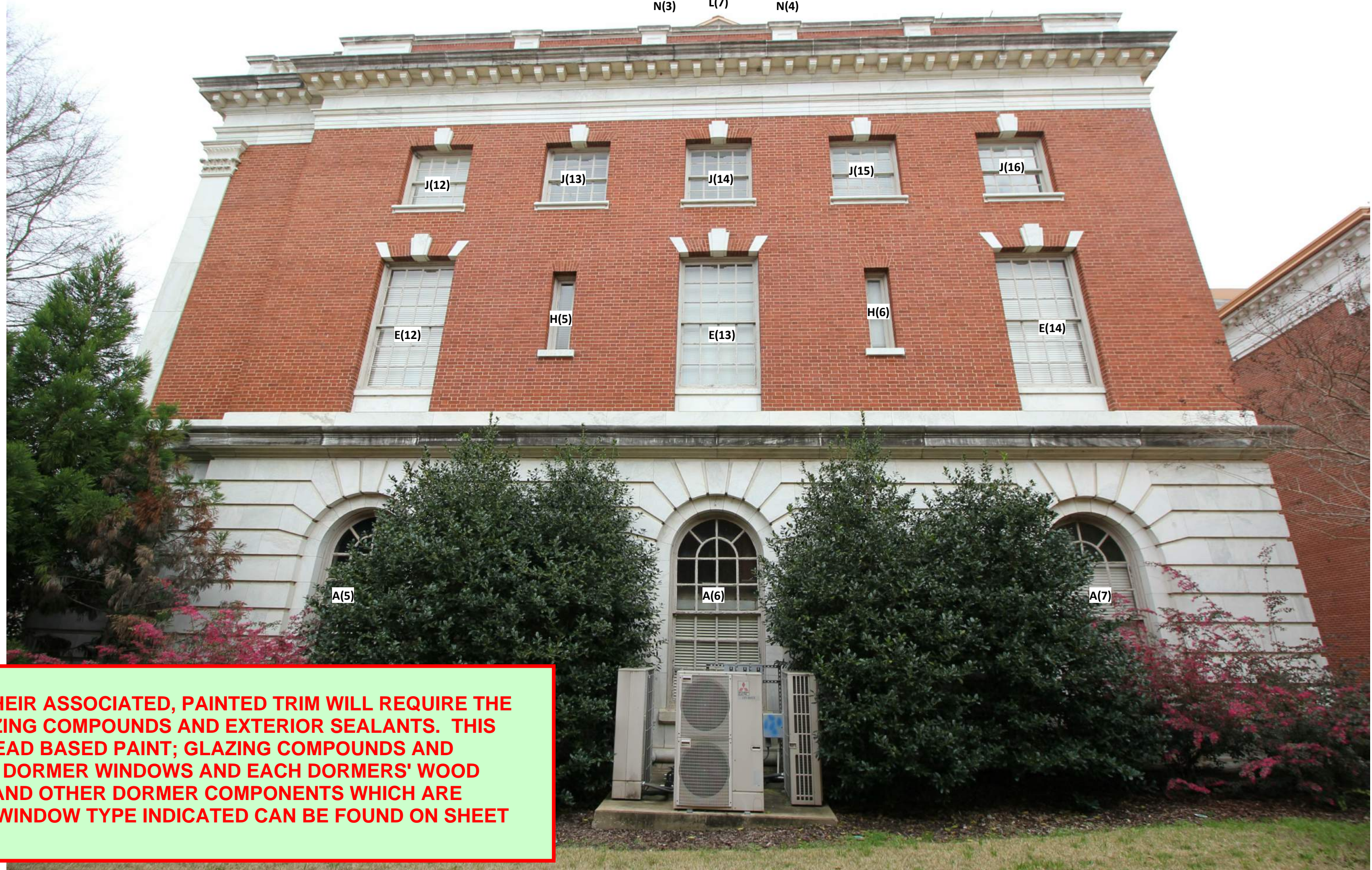
4 REAR ELEVATION (PART B)  
AA4.0 1/8" = 1'-0"





<b>A</b> COUNT: 7	<b>B</b> COUNT: 1	<b>C</b> COUNT: 9	<b>D</b> COUNT: 1	<b>E</b> COUNT: 14	<b>F</b> COUNT: 2	<b>G</b> COUNT: 5 WINDOW (4) / DOOR (1)	<b>H</b> COUNT: 6	<b>I</b> COUNT: 1	<b>J</b> COUNT: 16	<b>K</b> COUNT: 2	<b>L</b> COUNT: 7	<b>M</b> COUNT: 1	<b>N</b> COUNT: 4
SEVEN (7) TYPE A WINDOWS WILL REQUIRE LEAD BASED PAINT REMOVAL INCLUDING WIDOW SASHES, TRIM; + GLAZING COMPOUND REMOVAL; SEALANT REMOVALS ETC. TWO WILL NOT.	ONE TYPE B TRANSOM WINDOW WILL REQUIRE LEAD BASED PAINT REMOVAL INCLUDING WINDOW SASH; AND THE TRIM AND CASING AROUND BOTH THE TRANSOM AND THE DOOR BELOW (INCLUDING THE EXTERIOR JAMB). THE STAINED DOORS WILL NOT REQUIRE ANY ABATEMENT.	SEVEN (7) TYPE C WINDOWS WILL REQUIRE LEAD BASED PAINT REMOVAL, INCLUDING WIDOW SASHES, TRIM; + GLAZING COMPOUND REMOVAL; SEALANT REMOVALS ETC. TWO TYPE C WINDOWS SHALL BE REPLACED WITH NEW CLAD WOOD WINDOWS.	ONE TYPE D TRANSOM WINDOW WILL REQUIRE LEAD BASED PAINT REMOVAL INCLUDING WINDOW SASH; AND THE TRIM AND CASING AROUND BOTH THE TRANSOM AND THE ALUMINUM STOREFRONT BELOW (INCLUDING THE EXTERIOR JAMB).	FOURTEEN (14) TYPE E WINDOWS WILL REQUIRE LEAD BASED PAINT REMOVAL, INCLUDING WIDOW SASHES, TRIM; + GLAZING COMPOUND REMOVAL; SEALANT REMOVALS ETC.	TWO (2) TYPE F WINDOWS WILL REQUIRE LEAD BASED PAINT REMOVAL, INCLUDING WIDOW SASHES, TRIM; + GLAZING COMPOUND REMOVAL; SEALANT REMOVALS ETC. (INCLUDING EXPOSED PAINTED EDGES OF 2 OPERABLE CASEMENT SASHES AND PANELS BELOW) REMOVE EXISTING WEATHERSTRIPPING AT THE TIME ABATEMENT IS EXECUTED.	FIVE (5) TYPE G WINDOWS WILL REQUIRE LEAD BASED PAINT REMOVAL, INCLUDING WIDOW SASHES, TRIM; + GLAZING COMPOUND REMOVAL; SEALANT REMOVALS ETC. (INCLUDING EXPOSED PAINTED EDGES OF 1 OPERABLE CASEMENT SASH AND PANEL BELOW) REMOVE EXISTING WEATHERSTRIPPING AT THE TIME ABATEMENT IS EXECUTED.	SIX (6) TYPE H WINDOWS WILL REQUIRE LEAD BASED PAINT REMOVAL, INCLUDING WIDOW SASHES, TRIM; + GLAZING COMPOUND REMOVAL; SEALANT REMOVALS ETC.	ONE (1) TYPE I WINDOWS WILL REQUIRE LEAD BASED PAINT REMOVAL, INCLUDING WIDOW SASHES, TRI; +, GLAZING COMPOUND REMOVAL; SEALANT REMOVALS ETC.	FIFTEEN 1/2 (15.5) TYPE J WINDOWS WILL REQUIRE LEAD BASED PAINT REMOVAL, INCLUDING WIDOW SASHES, TRIM; + GLAZING COMPOUND REMOVAL; SEALANT REMOVALS ETC. WINDOW J1 WILL HAVE BOTTOM SASH REPLACED	TWO (2) TYPE K WINDOWS WILL REQUIRE LEAD BASED PAINT REMOVAL, INCLUDING WIDOW SASHES, TRIM; + GLAZING COMPOUND REMOVAL; SEALANT REMOVALS ETC.	SIX (6) TYPE L WINDOWS WILL REQUIRE LEAD BASED PAINT REMOVAL, INCLUDING WIDOW SASHES, TRIM; + GLAZING COMPOUND REMOVAL; SEALANT REMOVALS ETC. IN ADDITION TO LEAD BASED PAINT REMOVAL FROM ITS SURROUNDING DORMER CONSTRUCTION.	ONE (1) TYPE M WINDOW WILL REQUIRE LEAD BASED PAINT REMOVAL, INCLUDING WIDOW SASHES, TRIM; + GLAZING COMPOUND REMOVAL; SEALANT REMOVALS ETC. IN ADDITION TO LEAD BASED PAINT REMOVAL FROM ITS SURROUNDING DORMER CONSTRUCTION.	FOUR (4) TYPE N WINDOWS WILL REQUIRE LEAD BASED PAINT REMOVAL, INCLUDING WIDOW SASHES, TRIM; + GLAZING COMPOUND REMOVAL; SEALANT REMOVALS ETC. IN ADDITION TO LEAD BASED PAINT REMOVAL FROM ITS SURROUNDING DORMER CONSTRUCTION.

WINDOW L6 IS A "NEWER" REPLACEMENT WINDOW WHICH HAS NO LEAD PAINT. OTHER LEAD BASED PAINT REMOVAL ON ALL SURROUNDING DORMER CONSTRUCTION AT THIS WINDOW WILL STILL OCCUR.



**WEST FACADE:**  
ALL WINDOWS ON THIS FACADE AND THEIR ASSOCIATED, PAINTED TRIM WILL REQUIRE THE REMOVAL OF LEAD BASED PAINT, GLAZING COMPOUNDS AND EXTERIOR SEALANTS. THIS WILL INCLUDE THE REMOVAL OF ALL LEAD BASED PAINT; GLAZING COMPOUNDS AND EXTERIOR SEALANTS FROM THE ROOF DORMER WINDOWS AND EACH DORMERS' WOOD PILASTERS, CORNICE, GABLE, FASCIA AND OTHER DORMER COMPONENTS WHICH ARE CURRENTLY PAINTED. SIZES OF EACH WINDOW TYPE INDICATED CAN BE FOUND ON SHEET AA4.1

1 WEST ELEVATION  
1/8" = 1'-0"