

ADDENDUM #1

**City of Tuscaloosa
Neighborhood Lakes Cleanout Project
Project No. A13-0582
February 27, 2015**

- 1) The pre-bid conference began at 10:00 am on February 26, 2015 in the Narashino Room of City Hall. Representatives from the City of Tuscaloosa, CFM Group, and three contractors introduced themselves (sign-in sheet attached). The meeting followed a prepared agenda (agenda attached). The bid opening will be held on March 12, 2015 at 10:00 am in the Council Chamber of City Hall. Discussions during the conference led to some of the items listed in this addendum.
- 2) As discussed in the pre-bid conference, MBE/DBE/WBE Forms 1 and 2 may be submitted by close of business on February 26, 2015.
- 3) MBE/DBE/WBE Forms 3 & 4 must be submitted with the bid.
- 4) The dredging area may be accessed at the upstream end of the lake from 30th Avenue by means of Parcel 3004174003006000 owned by Brentwood Lake. Approximate parcel boundaries are shown on the included map. The Contractor may choose to determine the parcel boundaries by means of a survey conducted at the Contractor's expense.
- 5) Any damage to streets or roads shall be repaired at Contractor's expense.
- 6) If the Contractor chooses to pump water from the lake over the dam, he shall take care to protect the dam from erosion or structural failure (e.g., a sudden drawdown slope failure). Any damage to the dam resulting from construction of this project shall be repaired by the Contractor at the Contractor's expense and at no additional cost to the project.
- 7) If the Contractor chooses to pump water from the lake over the dam, he shall attempt to maintain a pool adequate for the survival of fish. Re-stocking the lake with fish is not part of the contract.
- 8) If the Contractor chooses to dispose of dredged material at a site other than the disposal site shown on the plans, he shall be responsible for all local, state and federal permits required.
- 9) The approximate budget for this project is \$150,000.

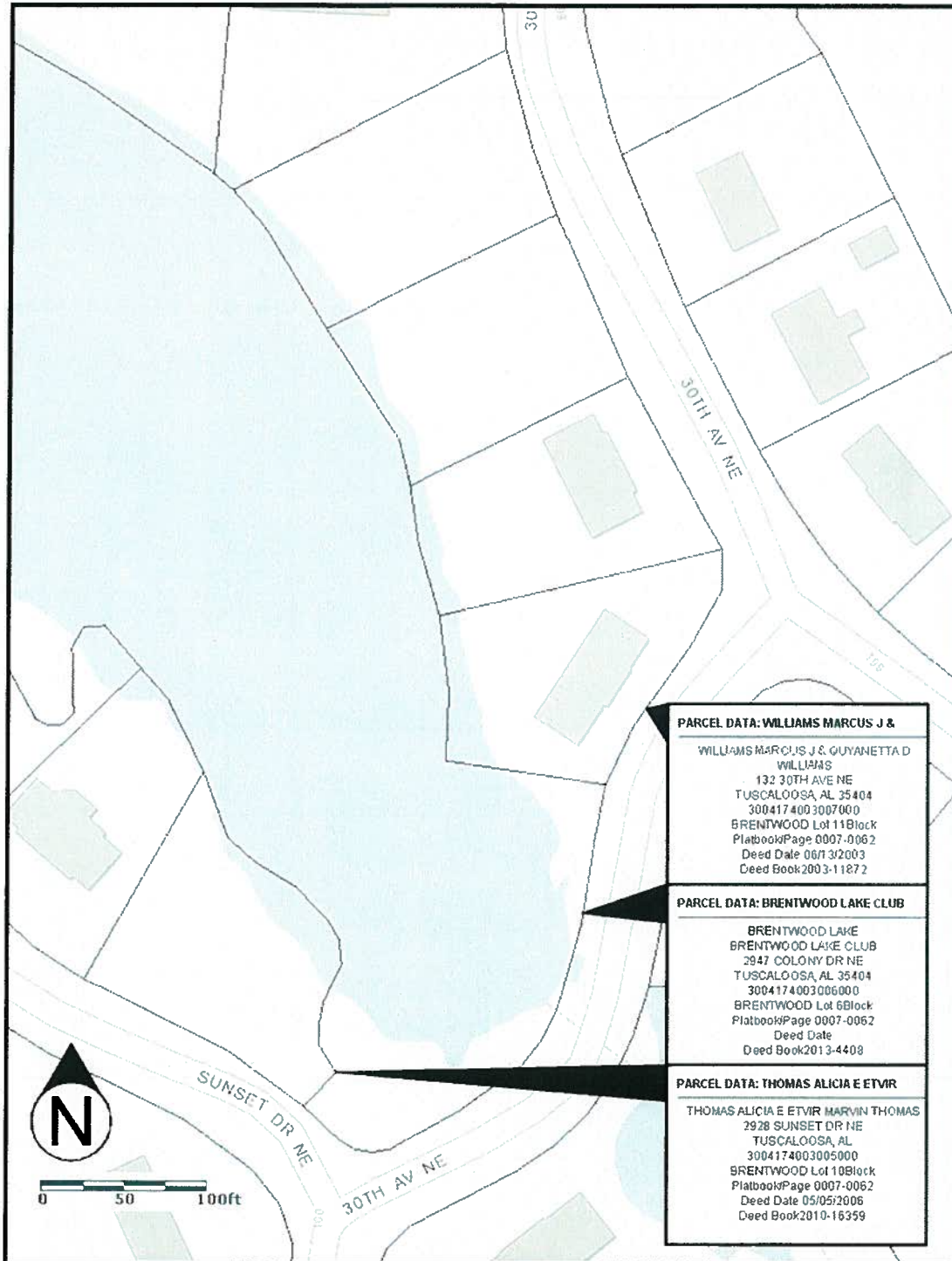


Figure 1. Approximate Parcel Boundaries.