

ADDENDUM NO. 3:

Date: October 1, 2014
Project: Salvation Army Center of Hope
Owner: The Salvation Army
Architect: Ward Scott Architecture

1.1 GENERAL:

- A. **Clarification:** Alagasco will furnish and install the meter and service to the building at no cost to the contractor.
- B. **HVAC & Electrical;** Refer to attached Addendum on R. H. Smith Engineering's letterhead concerning HVAC & Electrical items.

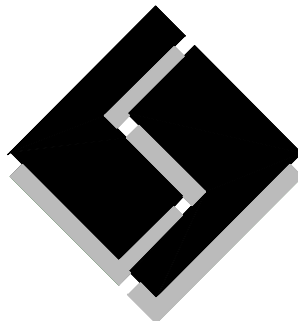
1.2 SPECIFICATIONS:

- A. **Section 004393; Bid Submittal Checklist;** para. 2.1.B, delete items #4, #5 and #11.
- B. **Section 042000; Unit Masonry;** para. 2.6, Architectural Stone Veneer; add "Bassco Caststone" to this paragraph.
- C. **Section 074113.16; Standing Seam Metal Roofing;** para 2.1.B; add the following manufacture "Morin".
- D. **Section 101530; Metal Walkway Covers;** para. 2.1 Manufactures; add "Mason Corporation" to this paragraph.
- E. **Section 102113.15; Stainless-Steel Toilet Compartments;** para 2.2, A, Manufactures, add "Columbia Partitions".
- F. **Section 114000; Food Service Equipment;** Para. 2.1 Schedule of Equipment, sub-para. OOO; delete item number 70.
- G. **Section 114000; Food Service Equipment;** Para. 2.1 Schedule of Equipment, sub-para. J, Item Number 10; delete 8" faucet, add (1) B-0512 4" faucet and (1) B-0462 flange. Plumbing contractor to provide and install supply lines from wall to backsplash of dish table.

1.3 DRAWINGS:

- A. **Clarification;** All outside CMU corners are to be bullnose block. This includes wall corners, wing walls, door and window edges. The exception is in the bathrooms where all corners are to be square edged.
- B. **Civil;** refer to attached supplemental drawing RFI #1; this detail for use in areas where curb or valley gutter are to be installed in close proximity to existing asphalt.
- C. **Sheet S302 & S303; Roof Framing Plans;** replace these sheets with the attached revised sheets.
- D. **Sheet A001; Finish Schedule & Finish Legend;** change all wainscot heights to 7'-8" in lieu of 7'-0". Refer to detail 8/A401 for typical layout and pattern where wainscot occurs.
- E. **Sheet A002; Opening Schedule;** Reference Notes; add the following:
 - 5. See Detail 5/A003 and 9/A003.
 - 6. See Detail 9/A003, All Shelter doors to have similar recess in CMU for door hardware.
- F. **Sheet A002; Opening Schedule;** 1/A002 Area 1 Opening Schedule; add note designation #5 in the "NOTES" column to "Shelter" doors number #1122H, #1122 I, #1122 K, #1122L, #1122N, #1122O, #1122Q, #1122 R.
- G. **Sheet A002; Opening Schedule;** 1/A002 Area 1 Opening Schedule; add note designation #6 in the "NOTES" column to "Shelter" doors number #1106B, #1116B, #1120A, #1120B, #1123A, #1125A. **Sheet A002; Opening**
- H. **Sheet A002; Opening Schedule;** 1/A002 Area 1 Opening Schedule; add opening #1113B to the schedule. This window is located in Social Services Office #1113. Width - 2'-0", height - 7'-8", elevation - F12, material - alum, glazing - Insul.
- I. **Sheet A003; Opening Elevations and Details;** 1/A003; Frame Elevations; delete frame "F5".
- J. **Sheet A003; Opening Elevations and Details;** 1/A003; Frame Elevations; change "F12" frame width to 2'-0" in lieu of 3'-4".
- K. **Sheet A102; Roof Plan;** 1/A102, Roof Plan; add the word "TYPICAL" to section key 9/A321. This detail occurs at all junctions between low and high roofs.
- L. **Sheet A321; Roof Details;** replace detail 9/A321, Overhang Detail with the attached supplemental drawing SD-2.

ADDENDUM



R.H. Smith & associates p.c.

Consulting Engineers

2110 Eighth Street, Tuscaloosa, AL 35401

Phone/ Fax 205 345 4402

PROJECT: Salvation Army Shelter	ENG JOB NO# 1374	DATE: Sept. 24, 2014
---	----------------------------	--------------------------------

To: Ward Scott Architecture

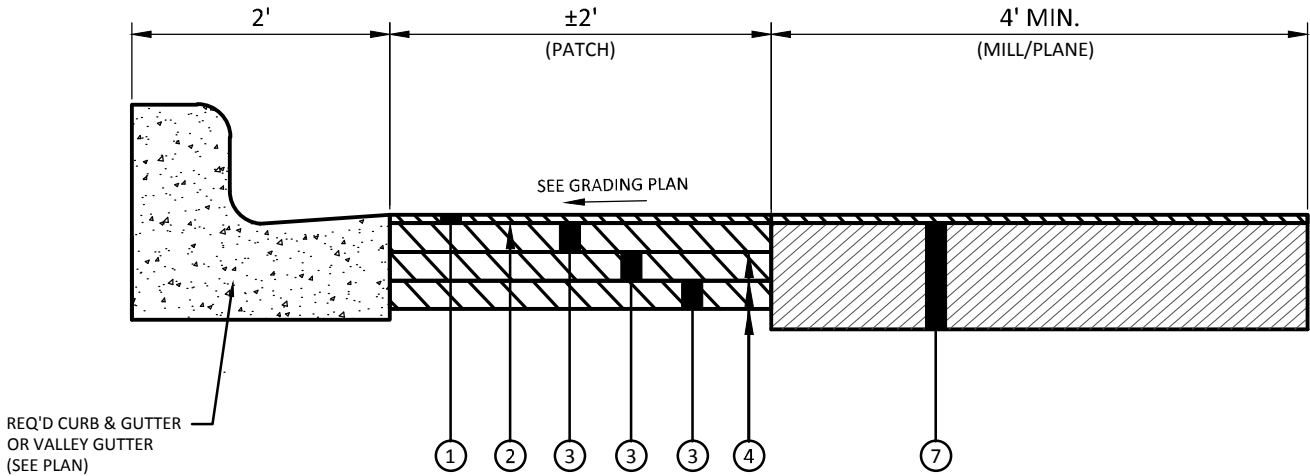
HVAC:

1. Dishwasher and grease hoods to be furnish and installed by food service contractor. See specification section 114000-FOOD SERVICE EQUIPMENT.
2. M001, Equipment Schedule: Delete reference to hood. Note on sheet M101 is correct.
3. M101, Drawing Notes: Delete note 3 from dishwasher hood. Note above is correct.

ELECTRICAL:

1. Fire alarm systems as manufactured by Notifier acceptable subject to plans and specifications.

END OF ADDENDUM



SECTION A-A

- ① REQ'D SUPERPAVE BITUMINOUS CONCRETE WEARING SURFACE LAYER, 1/2" MAXIMUM AGGREGATE SIZE MIX, (424A) (1.5" COMPACTED THICKNESS)
- ② REQ'D TACK COAT (405A-000) (0.10 GAL/SY)
- ③ REQ'D SUPERPAVE BITUMINOUS CONCRETE BINDER LAYER, 1" MAXIMUM AGGREGATE SIZE MIX, (424B) (2" COMPACTED THICKNESS)
- ④ REQ'D BITUMINOUS TREATMENT "A" (ALDOT SECTION 401D)
- ⑤ REQ'D CRUSHED AGGREGATE STONE BASE COURSE (ALDOT SECTION 825, TYPE B) (8" COMPACTED THICKNESS TO 100% AASHTO T-99)
- ⑥ REQ'D SUBGRADE (ROADBED PROCESSED, COMPACTED TO 98% AASHTO T-99) (6" MIN. THICKNESS) (MIN. CBR 10)
- ⑦ EXISTING PARKING LOT BUILDUP (RETAIN)

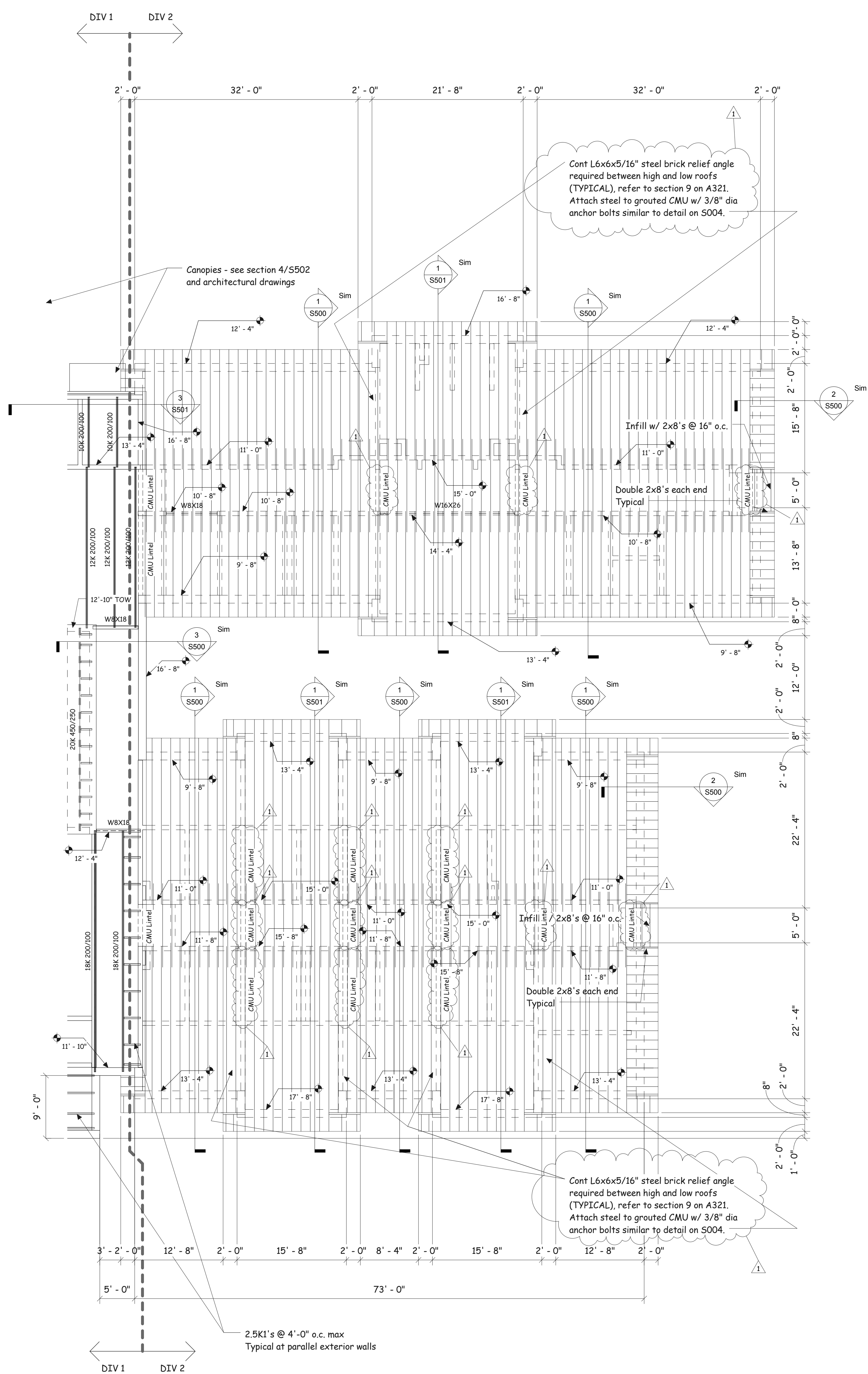
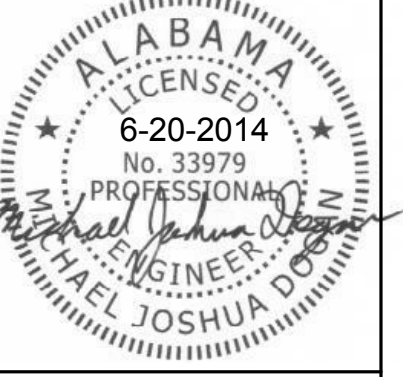
1 REQ'D CURB/VALLEY GUTTER INSTALLATION TYPICAL SECTION*
NOT TO SCALE

NOTE:

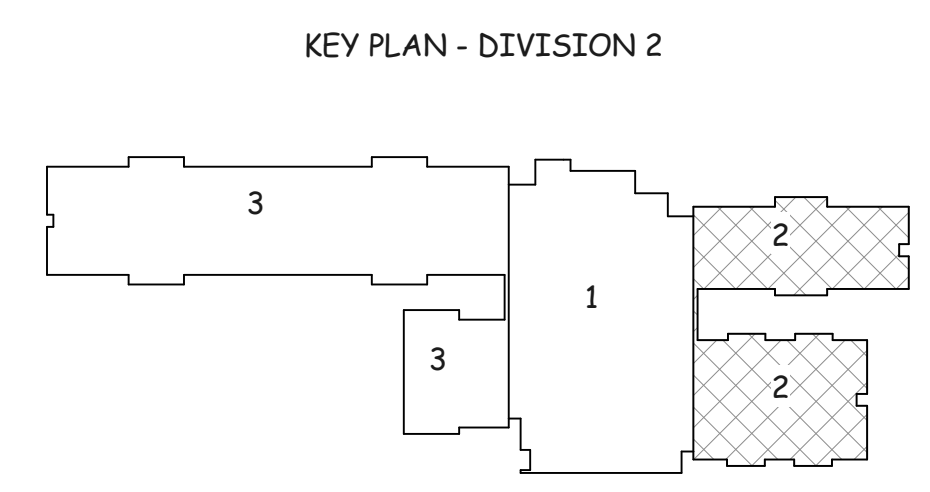
* THIS DETAIL FOR USE IN AREAS WHERE CURB OR VALLEY GUTTER ARE TO BE INSTALLED IN SUCH CLOSE PROXIMITY TO EXISTING ASPHALT THAT PLACEMENT AND COMPACTION OF STONE BASE AS SHOWN ON THE TYPICAL ASPHALT PAVEMENT DETAIL IS NOT POSSIBLE. FOR ALL OTHER AREAS, SEE TYPICAL ASPHALT PAVEMENT DETAIL FOR ASPHALT/STONE BASE THICKNESSES ADJACENT TO CURB OR VALLEY GUTTER.

No.	Date	Description

File Name: 13181.Curb Replacement.dwg		Sheet No.
Drawn By: QJR	Checked By: JAM	RFI#1
Date: 9/24/2014	Job No.: 13-181	



- DIVISION 2 ROOF FRAMING PLAN**
 1/8" = 1'-0"
- Sheet Notes:
1. See S0 Sheets for typical details and general notes.
 2. Reference all elevations to finish floor elevation (+) 0'-0".
 3. See plan for joist bearing elevations, or top of steel (TOS) beams.
 4. Roof construction at wings consists of 5/8" roof sheathing supported by wood I joists and dimensional lumber @ 16" o.c. max, see plan and sections.
 5. Roof construction over most of center section consists of 1 1/2" x 22 ga. type "WR" painted metal deck supported by steel joists @ 5'-0" o.c. max. See S0 sheets for more information and attachment details.
 6. Roof construction over hardened area consists of 5" of normal weight concrete on 9/16" x 24 ga form deck for a total thickness of 5.5" supported by steel joists @ 2'-6" o.c. max. See S0 sheets for more information and attachment details.
 7. Roof construction at high roof consists of single span 3" x 22ga steel decking supported by ring of steel tube beams. See S0 sheets for more information and attachment details.
 8. Refer to architectural drawings for all dimensions, slopes, elevations, etc... not illustrated on this plan. Coordinate all final dimensions and elevations with architectural.
 9. Assume the minimum working (unfactored) beam reaction is 15 kips, unless noted otherwise.



NEW CENTER OF HOPE FOR THE SALVATION ARMY
 2902 GREENSBORO AVENUE
 TUSCALOOSA ALABAMA

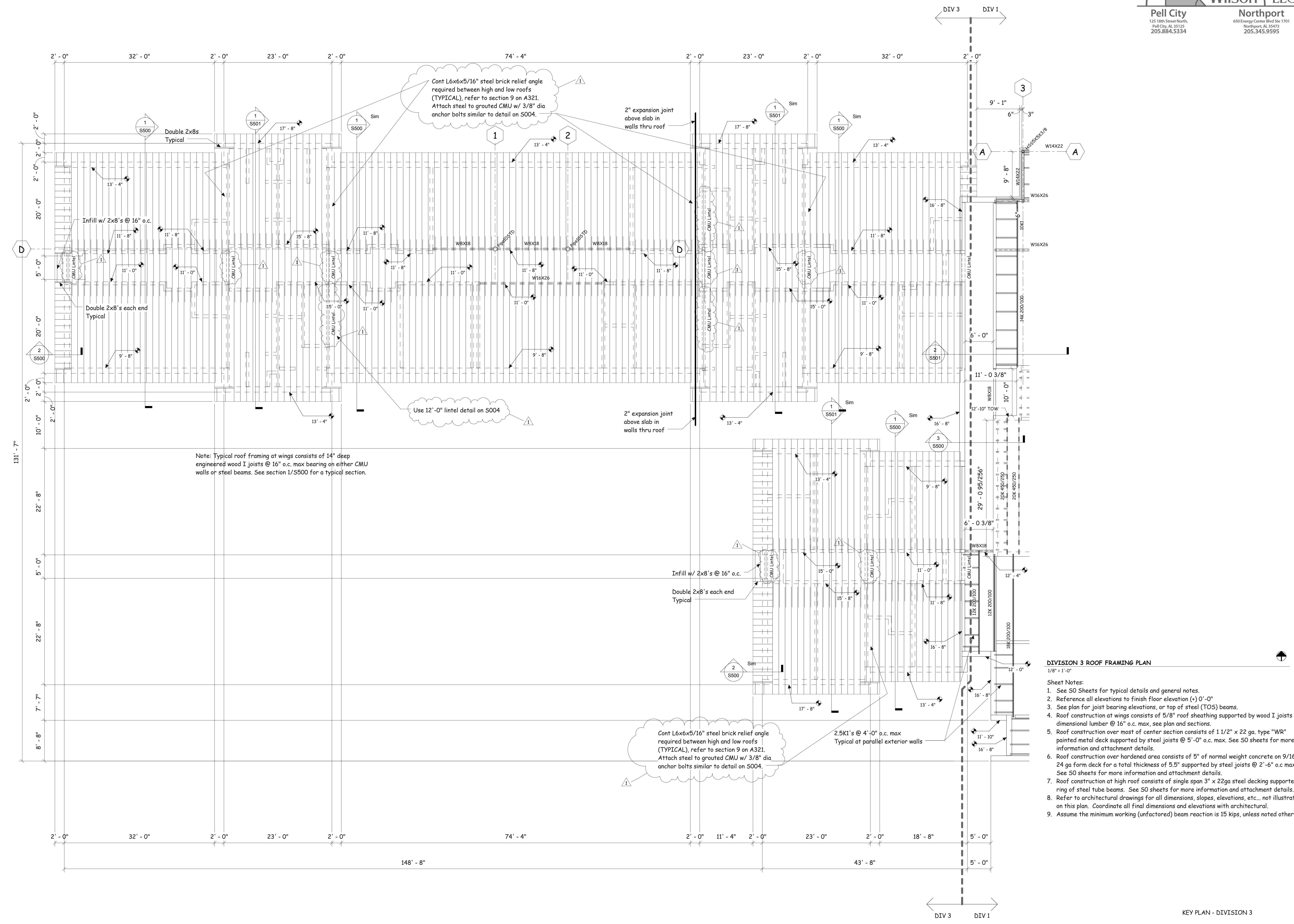
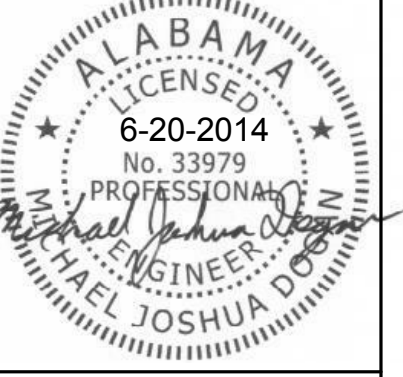
CONSTRUCTION DOCUMENTS

DATE: 6-20-2014
 PROJ NO: 11-057

REVISIONS		
#	DESC	DATE
1	Lintels	9-23-14

DIV 2 ROOF FRAMING PLAN

S302



Note: Typical roof framing at wings consists of 14" deep engineered wood I joists @ 16" o.c. max bearing on either CMU walls or steel beams. See section 1/S500 for a typical section.

Use 12'-0" lintel detail on S004

Cont L6x6x5/16" steel brick relief angle required between high and low roofs (TYPICAL), refer to section 9 on A321. Attach steel to grouted CMU w/ 3/8" dia anchor bolts similar to detail on S004.

2.5K1's @ 4'-0" o.c. max Typical at parallel exterior walls

Cont L6x6x5/16" steel brick relief angle required between high and low roofs (TYPICAL), refer to section 9 on A321. Attach steel to grouted CMU w/ 3/8" dia anchor bolts similar to detail on S004.

2" expansion joint above slab in walls thru roof

2" expansion joint above slab in walls thru roof

C:\Users\Josh\Dropbox (biv-engineers)_JOB\S\OSHWard Scott\Savation Army\Savation Army Structural CD.rvt

9/29/2014 8:00:00 AM

Copyright Ward Scott Architecture, Inc. All Rights Reserved

NEW CENTER OF HOPE FOR THE SALVATION ARMY
 2902 GREENSBORO AVENUE
 TUSCALOOSA ALABAMA

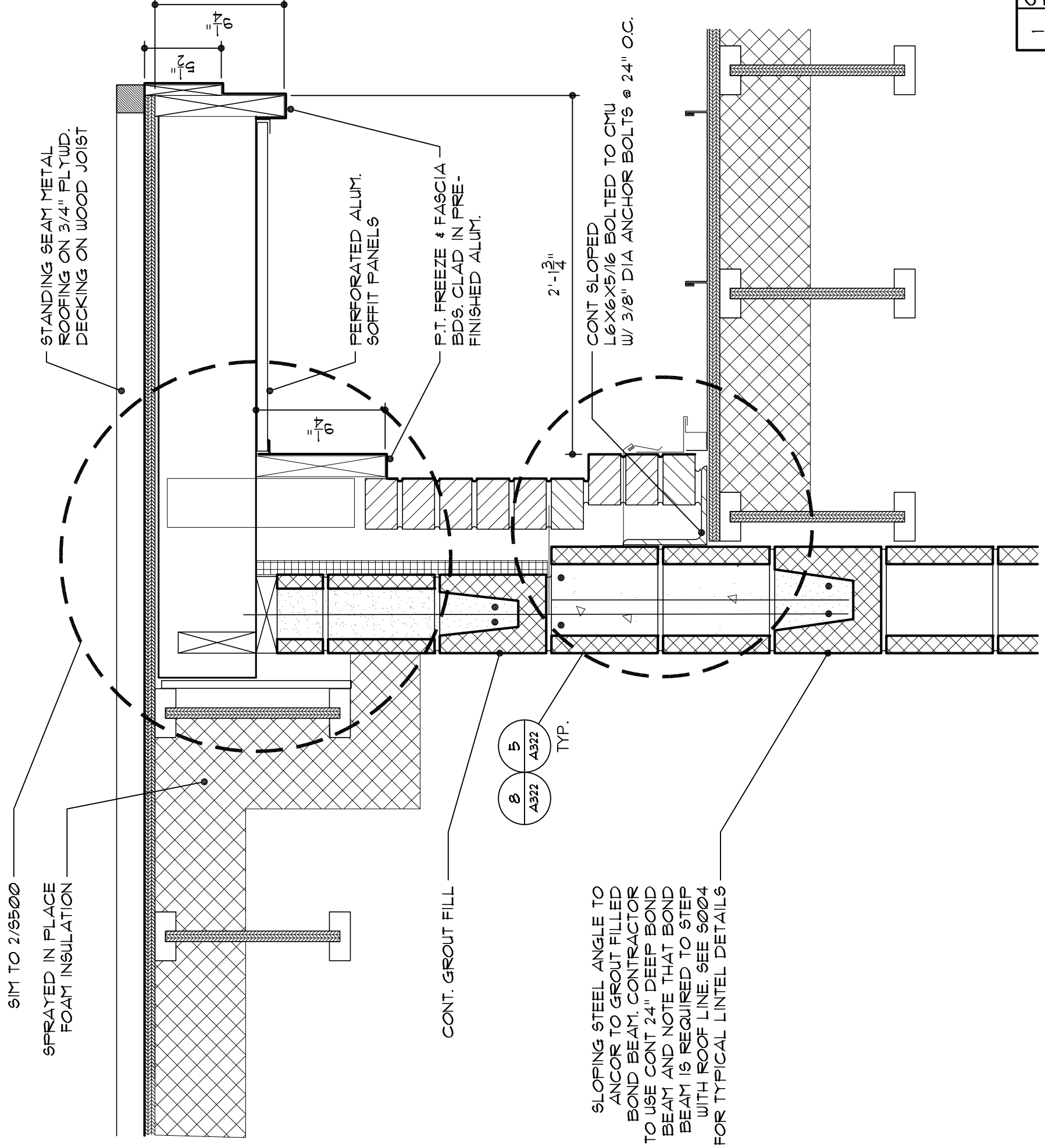
CONSTRUCTION DOCUMENTS

DATE: 6-20-2014
 PROJ NO: 11-057

REVISIONS		
#	DESC	DATE
1	Lintels	9-23-14

DIV 3 ROOF FRAMING PLAN

S303



SIM TO 2/5500
SPRAYED IN PLACE
FOAM INSULATION

STANDING SEAM METAL
ROOFING ON 3/4" PLYWD.
DECKING ON WOOD JOIST

PERFORATED ALUM.
SOFFIT PANELS

P.T. FREEZE & FASCIA
BDS. CLAD IN PRE-
FINISHED ALUM.

CONT SLOPED
L6X6X5/16 BOLTED TO CMU
W/ 3/8" DIA ANCHOR BOLTS @ 24" O.C.

5
A322
TYP.

8
A322

CONT. GROUT FILL

SLOPING STEEL ANGLE TO
ANCHOR TO GROUT FILLED
BOND BEAM. CONTRACTOR
TO USE CONT 24" DEEP BOND
BEAM AND NOTE THAT BOND
BEAM IS REQUIRED TO STEP
WITH ROOF LINE. SEE 5004
FOR TYPICAL LINTEL DETAILS